

Circulation 396

December 2021 Donation \$1

www.tatongtattler.com.au

Edition 348

TATONG CHRISTMAS PARTY/BBQ

Sunday, December 19th

Tatong Community Sports & Recreation Centre

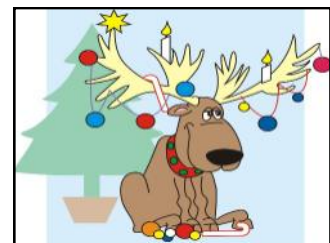
from 5PM

BYO - Drinks & Chairs

BBQ & salad supplied

Icy poles & treats for children

**All welcome, come & reunite with your
community**



Covid requirements apply

Enquiries: Gayle 5767-2342, Beth 5767-2250,

Joan 5767-2251



- Post and Wire • Post Driving • Post Hole Digging
- With over 25 years experience • Farm Fencing
- Post and Rail • Stock Yards • Horse Shelters • Frontend Loader
- Slashing • Pipe Laying to Stock Troughs etc.

• S1835 Kilfeera Rd, Molyullah Vic 3673

Email: bustedacre@people.net.au
0428715155 AH 03 57666338

DE FAZIO

Concreting & Paving

house slabs
shed slabs
decorative concrete
paving

Laurie - 0407 099 930
Matt - 0410 514 192
Christian - 0415 422 942

Moorngag Cemetery update

Have you seen unusual happenings at the Moorngag Cemetery, and been wondering what's going on?

Well it's official, the lawn section we have been working towards is now open for business! This new lawn section is part of the master plan that was developed in 2019 to provide an additional burial option to the existing old section.

We have utilised the grant money that we received last year from the Department of Health to build paths, roads and a rotunda. The rotunda is a central component of the new development and provides a perfect spot for our mural and storyboards with history relevant to the cemetery. All are due to be completed by late November. Landscaping the new area is our next project. This involves adding more vegetation such as trees, shrubs and seating so that it becomes a more pleasant place for people to visit.

We're really happy with the progress and look forward to a grand opening early next year. If you have a suggestion for us, then please send an email

to moorngagcemetery@outlook.com or give us a ring on 0499 524 455

So don't be shy, come and have a wander around, and check out what's been going on!

Molyullah Dates to note - Covid permitting but it is looking promising:

Friday, 10 December – Fish & Chip night from 5.30pm – Christmas Sale of remaining Spinning Wheel prizes to take place in the hall.

Thursday, 23 December – Christmas Party/BBQ at Sportsground

Wednesday, 26 January – Australia Day Community Breakfast at the Hall

Vacant position – Cemetery trust member

Cemetery trust name:	Moorngag Cemetery Trust
Advertisement date:	December 2021

The trust is currently seeking expressions of interest from members of the community who are interested in joining the trust as an honorary trust member.

Cemetery trust members are appointed by the Governor in Council for a term of up to five years and are accountable to the Minister for Health for the proper and efficient management of the public cemeteries under the control of the trust, including the provision of future cemetery services to meet community needs and the preservation of local history.

Being appointed to a cemetery trust provides successful applicants with a unique opportunity to develop their competencies as a board member. In addition, the Department of Health provides free governance training to all trust members.

To register your interest please contact the trust within two weeks of the date of this advertisement:

Trust phone number:	0499 524 455
Trust email address:	moorngagcemetery@outlook.com
Trust postal address:	P.O. Box 108 Benalla

The trust encourages applications from people of all ages, Aboriginal people, people with disability, people from culturally and linguistically diverse backgrounds and from lesbian, gay, bisexual, trans, gender diverse and intersex people. We will provide adjustments to the recruitment process upon request.



BENALLA FURNITURE REMOVALS

- Storage available short and long term
- Servicing all Victoria and interstate
- Professional and friendly staff
- No move too big or too small
- Quality boxes and moving materials for sale
- Reliable on time and insured

Let us take the stress out of moving!



0419 142 666

BFR@outlook.com.au

**BUSH
BLOCKS
Wanted!**



**CALL
NOW**

Nutrien Harcourts

Nutrien Harcourts Benalla
(03)5762 2188
www.nutrienharcourts.com.au

Andrew Ashton
0419 000 850
andrew.ashton@nutrien.com.au

COVID PERMITTING (but pencil in this date)



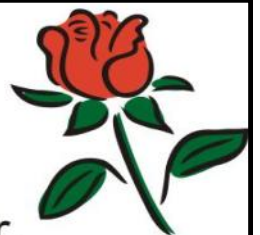
MOLYULLAH CHRISTMAS PARTY/BBQ

Thursday, 23rd December
Molyullah Sports Ground
from 5.30pm

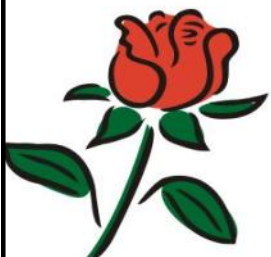


BYO
Food, Drinks, Chairs, Table
and Good Cheer
All welcome

Santa will be making an appearance!



So many thanks, so much
appreciation, to
Darcy Hogan
retiring secretary of the Tatong Tattler.
Darcy was welcomed onto the Tatong Tattler
Committee in July 2010.
Eleven years later he is leaving Tatong and we wish
Happy & Safe Travels to he & Willi.



And great Thanks & Appreciation to
Linda DeFazio
who has taken on the role of
Secretary to the Tatong Tattler.



Bookkeeping Services

**Covering Benalla and
surrounding districts**

MYOB, Xero, Registered BAS
agent, payroll, debt collection,
accountant liaison and general
administration duties.

A professional and confidential
service is provided at all times.

*For inquiries please phone
Lisa Grover (03) 5768 2662
or 0417 051 296*

PEST ANIMAL MANAGEMENT

KANGAROO BY PERMIT

RABBITS, FOXES, PIGS, DEER CULLING

North East BUNNY BUSTERS

e-mail nebunnybusters@bigpond.com

Ph. Ted 0421363967

AGRICULTURAL BLASTING

RABBIT AND WOMBAT BURROWS
COLLAPSED USING EXPLOSIVES

STUMPS AND ROCKS REMOVED

WORKSAFE LICENCED



Shane & Janine Lewis

- **QUALITY BUILDERS**
- **NEW HOMES,
EXTENSIONS &
RENOVATIONS**
- **BENALLA &
SURROUNDING
AREAS**
- **NO OBLIGATION
FREE QUOTES**

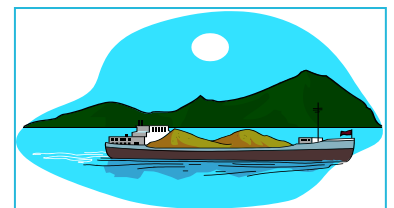
Bedrock Quarries

✓ Farm access roads

✓ Driveways

✓ Tracks

✓ Hardstand areas



All made, repaired or renovated
using Lurg Hills gravel

Call me: Tim Ward – 0427 587 458

2022 Australia Day Award nominations now open

A reminder to encourage nominations through your networks for the 2022 Australia Day Awards, with categories being Citizen of the Year, Young Citizen of the Year, District Achiever of the Year, Community Group of the Year and Community Event or Project of the Year.

The awards celebrate achievements and contributions individuals and community groups have made to the community.

Chair of the Australia Day Advisory Committee, Cr Bernie Hearn said we all know someone who has made life in Benalla Rural City better in some way, especially during these current times.

"I encourage you, to give some thought to the people around you. Friends, workmates, students, someone at your sports club or the club itself, community events or projects and consider nominating them, and acknowledging the great work they do helping the community."

"This is a way of saying 'thank you' to those who give their time and effort to making Benalla Rural City a great place to live," said Cr Hearn.

"The Awards are something positive to look forward to after what's been a challenging year. We will celebrate all nominees and announce the winners on Australia Day."

There are three ways to nominate a person or community group:

- [online](https://www.benalla.vic.gov.au) at www.benalla.vic.gov.au
- download and print the [guidelines and nomination form\(PDF, 170KB\)](#)
- pick up a hard copy from the Customer Service Centre (Mon-Fri 8.30am-5pm).

Nominations close on Wednesday 1 December 2021.

Have Tatong Achievers for 2021 been Nominated?

White Gate



Dates

The final **White Gate Dinner** for 2021 will be held at the **Tatong Tavern** on Wednesday December 1st. Bring your mask, your vaccination status, (hopefully it won't be long before those can be consolidated into one item) a Christmas joke, and a toast for 2022. (Joke & toast consolidated into one?)

Note that a few days later (trust me) the very first Whitegate Dinner for 2022 will be held on Jan. 5th.

LOST: A year, named 2021. Last seen dodging in and out of lockdown. Only the tail remains, where did the rest of it go? I think the cat must have got at it.

White Gate Fire Brigade Roster:

Extended version as there will be no January issue of the Tattler. Here's hoping that exercising the truck is the only action the Brigade will see.

James Parton	21 Nov	Matthew Defazio	2 Jan
Angus McMillan	28 Nov	Ross Runnalls	9 Jan
Hamish McMillan	5 Dec	David Elford	16 Jan
Laurie Defazio	12 Dec	Leigh Humphries	23 Jan
Alan Stafford	19 Dec	Noel Hutchens	30 Jan
Bill Sykes	26 Dec	Bill Ferguson	6 Feb

- Andrea Stevenson, 0429 439 336

Worms on the window.

If this event hadn't been witnessed we would have still been scratching our heads trying to work out what had happened.

The picture shows worms spattered on the window pane – how did it happen? – any ideas?

The answer – a blackbird, with a beak full of worms, flew, full throttle, into the window, disgorging the worms. John Knapper.





Garden Daze

The best time to plant a tree is 20 years ago - the next best time is now

A very wet ending to Spring has the grass growing and growing . . .



Phalaenopsis (Moth) orchid care:

With its long stems, dainty wing-like flowers, deep green foliage and a long-lasting nature Phalaenopsis Orchids are a very popular present. If you find yourself the lucky recipient of one of these on Christmas morning – here is how to keep it healthy and flowering for up to 6 months.



Don't water it too much: Orchid roots are very susceptible to rot if they are constantly moist. Water - then leave it to almost dry out before watering again.

Keep the crown dry: The crown (or centre), where new leaves emerge – also doesn't like to get wet. If water is trapped in the crown, it can lead to rot. Water carefully and blot the crown with a paper towel if necessary.

Keep warm, but out of direct sunlight: Phalaenopsis Orchids do well in temperatures, between 24°C and 29°C. and 15 - 18 at night. Keep out of direct sunlight to avoid burning the plant and beware of leaving the orchid near a window at night, as the temperature can drop below the "comfort zone" which can prove fatal.



Humidity: While not watering too much, a humid atmosphere will keep the plant hydrated without being wet.

Position away from air conditioning, as this can dry it out and hot, dry conditions can cause unopened buds to drop.

To give the plant the humidity it needs, stand the pot on a tray of pebbles and fill the tray with water. The pebbles will

prevent the roots from sitting in the water and will provide a humid zone where the plant needs it most.

Feed well: Apply a dilute high-potassium liquid orchid food every two weeks to encourage flowering.

Keep bugs away: Mealy bug is the most common pest found on the plant - spray or wipe some white oil onto both sides of the leaves to suffocate the bugs.



Cut the stem *correctly* to get flowers again:

When the orchid finally finishes flowering, new flowers can be encouraged.

If the flower stem is left as it is: there may be a repeat flush of flowers, however they are generally smaller than the first blooms. Also if left - the stems can become somewhat inelegant and gangly.

Pruning the flower

spike back to a node will almost always result in another bunch of lovely blooms, often within 8 to 12 weeks. To do this, cut the stem, leaving just two nodes remaining – the little brown lines below where the flowers were. One of these nodes will become a new flower spike.



If the spike becomes withered, yellow or brown - it should be removed (by cutting off at the base of the plant) as this will not produce any more flowers. Removing the spent spikes allows the plant to put energy into root development and growth - which should result in a lovely new flower spike.

When to repot: Being epiphytic or saprophytic, the Phalaenopsis Orchid grows on trees or rocks—hence their thick, fleshy climbing roots and the need for a loose, chunky potting mix.

When it comes time to repot, either every 12 – 18 months or once there is no growing media remaining, it is best to use a bark-based commercially available Orchid Mix blend suitable for epiphytic orchids.

Select a new pot: that is around 5cm wider than the previous pot. It doesn't need to be any deeper, orchids prefer shallow pots as the roots tend to spread out rather than down. When selecting a new pot, there are two real options either a terracotta orchid pot with holes for roots around the outside, or the clear plastic pots they are often sold in. The clear plastic pots are said to allow the roots to absorb sunlight, and these pots also allow for easy inspection of the roots for any sign of rot or pests. Whichever container you choose - make sure there are sufficient drainage holes.



THE GIRL'S SHED held a three day weekend in November where very talented girls attended to enjoy good company and share their skills. They attended from Melbourne, Myrtleford, Lima East, Swanpool, Benalla and of course Tatong. Crafts were quilt making, ceramics, crocheting, knitting, Diamond Art and many more.

Whilst we were having lunch on the Sunday, a couple called in, they were doing the North Vic Art Trails (not sure of the correct title) and were looking for the sewing machine on the power pole at the Tatong Hall. This sewing machine was the work of the very talented girls making brilliant designs with their ceramics.

It was a great community weekend and catch up with friends.

Joan Lewis



COMMUNITY

Recently, our neighbours, Robert and Irene, 'misplaced' a steer. After a few phone calls, everyone knew to be on the lookout for a Hereford steer.

He eventually 'surfaced' at Darren and Catherine's farm, Mirima. It seems he'd been for a stroll through the bush, but, cattle being social animals, he sought company.

Darren and Catherine were due to muster their cattle for preg testing. Robert, Janette and I popped up to help. After preg testing, the herd, along with the wayward steer, were left in the paddock next to the road in the knowledge they would eventually make their way up to the loading yards.

There was some discussion about the best way to get him home once in those yards. We considered bringing his mates down the road, letting him out with them and then taking them all home. This method seemed fraught with risks, not the least of which was more of them going bush.

I remembered that neighbours, Kevin and Sharryn, have a cattle trailer. I suggested I would ask to borrow it. I phoned Kevin and his answer was simply, "it's in the shed, just come and get it when you need it". We now just had to wait.

Two or three days later, the call came that he was in the yards, ready and waiting. Robert picked me up and we collected the trailer. Up to the yards and we loaded the steer. As we approached the paddock he saw his mates and started calling out to them. I swear he was saying, "G'day lads, guess where I've been".

He stepped out of the trailer into the paddock and swaggered up to his mates to tell of his adventures. A real community effort all round.

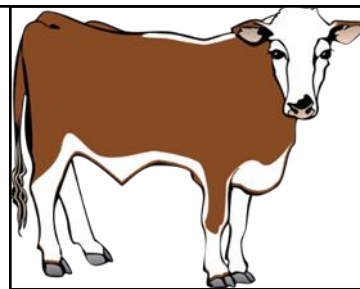
While in the paddock, I noticed the nearby power pole. This line was installed originally to take power down to Janette's uncle, Lex Devitt. Lex bought his block, Tiger Hill Park, in about 1952. It was when Janette and I decided to move to Molyullah, he set about getting the power on. That was the late 1980s.

He asked Robert and Irene if he could 'hook onto' their line. They had no problem with that. It needed eight poles, two of them on Robert and Irene's farm, to get the power to Lex's cottage. This meant we only needed one pole to get power across to our house site.

The two poles on Robert and Irene's meant that Brian and Leanne could each power up their houses now. But wait, there's more. Fred and Rene at the piggery in Watchbox asked if they could 'hook onto' our line. Of course they could! So the line goes from O'Dea Rd, across Mirima, across Schultz Rd and down into Watchbox. Others over there have also 'hooked on'. There would be at least six houses have power from that original line.

I mentioned to Robert that we are still grateful for the line going through. His reply? "We are grateful to Wayne and Carol for the power coming to us".

That's community!
John Knapper.



What's wrong in this photo?

Someone certainly has a wry sense of humour. This sign appeared on the top of the depth indicator on this creek crossing.

For those who assume it was me – sorry to disappoint you.

So, what is wrong with the photo? Is it:-

No swimming

Crocodiles

A depth indicator that's yet to be challenged

If you're out and about and want to put a smile on your face, come and have a look.

You might need to be fairly quick if you do want to see it. I recently noticed a council ute stopped at 'the scene' for a few minutes, I suspect it might be removed if the road crew ever get out this way to fix the road.

John Knapper

PS – Sign seen outside a bookshop in Wang – "travel books are now in the fantasy section".

Swanpool News

Our planned community picnic had to be postponed due to rain, but Swanpool is still buzzing! Our Bowls Club is attracting new members, and our local Primary School children and families attended a short ceremony at our War Memorial on Remembrance Day, to mark the traditional 2 Minutes' Silence.

Meanwhile, the Cinema is back in full swing, with a great programme for all tastes, culminating in our fabulous New Year's Eve Gala, featuring two modern classics, "The Dressmaker" and "Love Actually" and a festive supper. Seats will be at a premium, so don't forget to book ahead via our Trybooking links, or call 0498 007 988, and leave a message- that way, we can ensure we have plenty of champagne to see in the New Year! On New Year's Day and Sunday 2nd January we will be screening the long awaited Bond film "No Time To Die", with Daniel Craig's swansong in the role he has made his own over more than a decade.

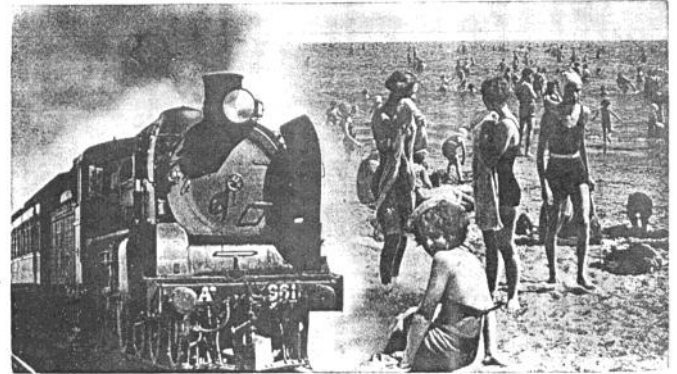
In November, by popular demand, we are screening an extra matinee for "Military Wives", Friday 26th November at 11.00am. Details of all our films are online www.swanpoolcinema.com.au, or on our printed programmes, available at the Store, or at the Hall, as well as at our usual venues in Benalla and Mansfield.

In common with other local businesses, and to keep us all safe, we request that all our patrons are double vaccinated, and can produce valid proof on attendance.

We look forward to welcoming you at our great little Cinema soon!

Deborah Smith

TATONG and DISTRICT SCHOOLS' Picnic to... PORT MELBOURNE



FRIDAY, MARCH 3

Low Fares by Special Train :—

	Time-table	Children under 16 Years	Bona fide Senior Scholars, 16-22 Yrs.	Bona fide Teachers	Adults
TATONG ... Dep.	a.m. 5 50				
MALLUM ... "	6 5				
LIMA ... "	6 15	4/2	11/2	11/2	14/11
KARN ... "	6 45				
BENALLA ... "	7 40	3/10	9/9	9/9	13/-
BADDAGINNIE ... "	7 50				
SPENCER ST. Arr.	10 55				
FLINDERS ST. Arr.	11 0	Passengers transfer to Electric trains for Port Melbourne			

On return, Special train leaves Flinders Street 6.30 p.m. and Spencer Street (No. 8 Platform) 6.35 p.m.

Tickets available for return until April 3 by all trains except the 6.30 p.m. "Spirit of Progress."

Tickets may be purchased up till 12 noon on Thursday, March 2, from the Head Teachers of Schools. Also from Mrs A. M. McCauley, Secretary, Tatong. Intending passengers are strongly advised to secure their tickets early.

A. M. McCAULEY, Tatong, Secretary.

A. 388/39

Victorian Railways Print

930—39

John Brogan

24/11/2008

The years have rolled on, sadly without you
We miss your wonderful self. Your family has grown since you left us
My little girls do know the stories of their pop

I know the pleasure they would have given you.

Rest peacefully my darling.

Elaine Matt Jackie Kathy and their partners.

Suck it Up

SEPTIC PUMP OUTS

Why is it important to pump my septic tank out regularly?

Over time scum and sludge layers build up in your septic tank, eventually limiting the amount of available liquid. This does not allow the septic tank to perform one of its basic functions - to allow for settling of solids below the outlet level.

The waste will then flow directly on to the next part of the system untreated. If this situation persists, the scum and sludge will flow through to the distribution field, eventually causing blockages and malfunction - a messy, smelly and costly exercise to repair.

It is recommended that septic tanks are pumped out every 3 - 5 years



Call us today to get your septic tank cleaned out

0447 521 981



Jack Wallace - 1945 – 2021

Jack played football with Tatong in the late 1960's under coach Max Newth. He played Tennis with Tatong in the 1980's and 1990's where he was a valued member of the Club. Our sympathy to Liz. R.I.P. Jack.

Photo is of the B Grade Team who played in the Grand Final in the 1987 -1988 season. They were runners-up. Jack is in the white cap.

*Tatong Heritage Group wish you a joyous
Christmas and Happy New Year*



*An invitation is extended to all to join us for a cuppa as we delve into the past of
Tatong and District*

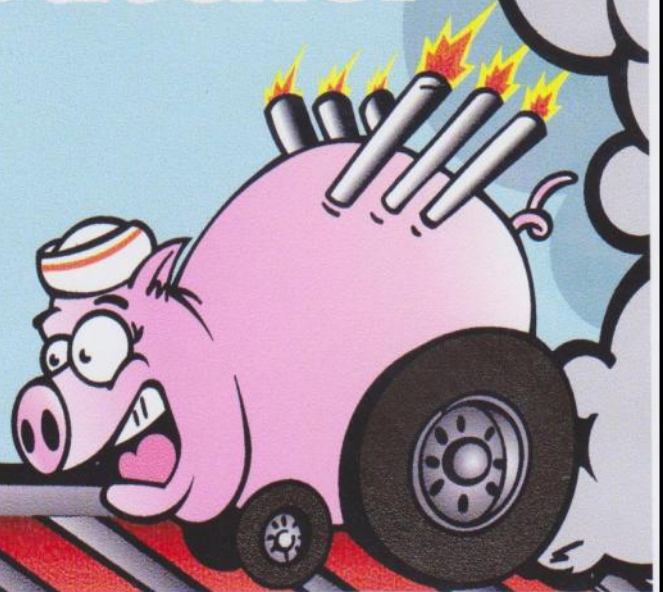
*The next meeting will be held on 17th January 2022
at the Tatong Memorial Hall at 4pm*

*Contact us at.
Beu 5767 2324 or
tatongheritage@yahoo.com.au*

Molyullah Mobile Butcher

Prompt service
Competitive prices

Rusty 0428 666 250



NORTH EAST TOURING SOLUTIONS



All Aspects of Caravan, Trailer & Horse Float
Servicing, Repairs & Upgrades.

Diesel Heater Sales & Installations

Water & Gas Repairs & Installation

Vehicle Accessories & Setups

Alko ESC Installer

104-106 Tarcombe St

Euroa 3666

General Servicing & Maintenance

Electrical Repairs & Installation

Battery & Solar Setups

Insurance Repairs

0411 513 695

rowan@netouringsolutions.com.au

**TCGBGS President's report
AGM November 10th 2021**

After having to cancel our event in 2020, we agreed to go ahead with the 2021 sale.

On 24th March 2021, I emailed Sharon Geer at Benalla Council asking whether or not the Benalla Festival would go ahead in 2021.

On 23rd June 2021, Sharon asked for expressions of interest for the 2021 Benalla Festival.

I replied saying we would again participate in the Festival, especially as this year's theme was to be 'community'.

Unfortunately, Don Firth emailed on 19th August 2021 that the Festival was cancelled again. He offered to help if they could.

We decided to press on independently. We did have the 'luxury' of knowing that we could cancel at short notice if we had to.

By 4th July 2021, we had our QR code and the sale was registered with the Victorian Government as a tier three covid safe event. This meant that we would be required to adhere to the covid rules applicable on the day.

With the completion of the event application to Benalla Council and the notification of the event to all emergency services, we were ready. We just needed our region to be open on the day.

Worthy of note also is the fact that, with so many lockdowns and restrictions throughout the year, meetings were scarce. Much had to be, and was, achieved via email.

The 2021 sale was held on the 31st October.

I consider it to have been successful – a report on the day will be tabled at the general meeting.

I thank all committee members for their contributions to this success.

This year we lost three committee members – Mike Larkin, Brad McDonald and Julie Gold.

The 2022 sale will be on Sunday 30th October. I note that this will again be the fifth weekend of the month.

John Knapper

SHEPHERDS

CONTRACTING

**Hay Baling, Net Wrap Rolls,
Silage, Mowing, Raking
Will Consider Shares
Hay and General**

Carting

46 Ft Drop Deck

27 Ft Tray Truck

**Pasture Sowing-Direct Drill-
ing or Over Sowing**

Pasture Renovation

HAY FOR SALE

**Prompt and Professional
Service**

**Call Darren 0438850918
GRETA SOUTH**

3rd Friday each month from
10am. \$5.00 BYO lunch

THE GIRL'S SHED

Tatong Memorial Hall
ALL WELCOME



Quentin White & Co
TANKS & PLUMBING



6,800 - 500,000 Litres

Zincalume & Colorbond Steel Pioneer Water Tanks

Australian made BPA free Liner

20 year conditional warranty

Supply, delivery & installation included

Call for a tank quotation, or email

quentinwhiteplumbing@gmail.com

0407 90 36 37

www.qwtanks.com.au

Cuballa Kennels & Cattery

• Spacious Heated &
Cooled Indoor Kennels
with Individual Outdoor
Grass Runs



• Climate Controlled Cattery
• Walk-in Modules



Phone 03 5766 4363

679 Winton-Lurg Rd, Lurg

www.cuballakennels.com.au

Gravel/Crushed Rock Supplies

- ✓ Crushed Rock ✓ Aggregates
- ✓ Sand & Gravel ✓ Feature Rock

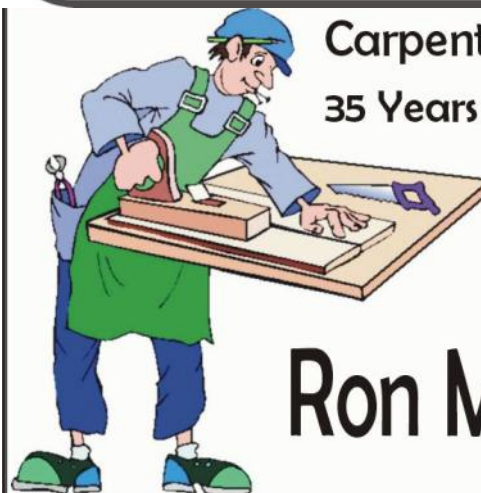
To suit Driveways, Laneways, Pathways etc
Earthmoving equipment available for all jobs

**Servicing all areas
Direct to public
Pick up or Delivery**

**Buy direct
from the quarry
and save!**



Ph 5768 2366



**Carpenter / Joiner
35 Years Experience**

Ron Morris

- ❑ Home Maintenance and Extensions
- ❑ Renovations
- ❑ Plastering
- ❑ Concreting
- ❑ Carpentry
- ❑ Tiling

**No Job Too
Big
or
Small**

Cnr Mitchell & Stephens Rd, Tatong

Phone 5767 2327

Mobile 0417 588 784

Gawn to Town

A Park by Any Other Word

There was once a young fellow from town, who thought to go driving around, he thought for a lark he'd go walk in a park, but he ended up on private land.

"Sandridge Park"? I said, "that's the next farm over." He was so sad, so dismayed to find that the term "Park" didn't invariably mean a place of public recreation, that I let him drive down through the sandhills to our river frontage. There he trustingly followed the track straight into floodwaters, and we spent the rest of the day rescuing his car, but that is another story.

The word "Park" is thought to come from an old term meaning enclosed land, where the land-owner has 'game' in the park, and if the public (commoners) get inside the park they'll be shot, trapped, hung and/or transported for life. (Ironically the word "paddock" probably comes from the same source. Farm paddocks being more a park in the old style. Honestly, I should have had that fellow transported.)

Stately homes with wealthy "landed" gentry took pride in having a handsome park, and hired the likes of Capability Brown to design them; lawns grazed by game or stock, set about with nice trees. A thing of beauty and one hell of a status symbol.

Urban parks were becoming common (pun intended) in the 17th century, from the practice of having pasture lands within the safe confines of the village. When the industrial revolution kicked off, factories filling the air with smog, and people crammed into slums, public parkland became the escape. And as the natural world diminished, the concept of "National Parks" was born to preserve just a bit of it. Along with blackberries, horses, pigs, etc.

The first settlers and explorers of "New Holland", aka Australia, described and sketched many places as akin to parkland. Those eager souls flocking to the goldfields were delighted to travel through a park-esque landscape, level grass set about with fine trees. At last, a great parkland for the common people! Unfortunately once the burning stopped, the rabbits, weeds and cloven-hoofed ruminants arrived, then the ecosystem changed rather a lot.

As our cities expand, like mould on a cheese, public parks are a breath of oxygen. They are also great places to socialise. Indeed, I understand that in Victoria there is a law requiring one block in so many houses to be left for public recreation. However, for a small fee a developer can have that waived, and councils are happy to oblige, declaring that maintaining parks is too much work, and that nobody uses them. So new estates fill with bricks and mortar, and even backyards have gone out of fashion.

May your Christmas involve some grass and trees and outdoor happiness, be it at a Local, State, National, Theme or Skating Park. Just don't get a parking ticket.

- Andi Stevenson



Yahoo Enhanced

Yahoo email users - do you like your Contacts to be "Enhanced"? They probably are, as Yahoo isn't asking first. Using a clever trick, contact information is extracted from every email that goes by. Address, phone number, work address, gibberish. New people are added, and multiple copies the same people. Smart? I wasn't happy.

To check, go to Settings (top right), More Settings (lower right), Contacts (bottom of list on left), & note "Enhanced Contacts". Mine said "Disable", in red, and I did. Now it says "Enable" in a hopeful blue. It also told me my data will be returned to normal. It wasn't - I had to mend my Contacts list myself.

Sorting the Contacts

Downloading a backup copy of your contacts is a good idea at any time; & worth doing before disabling Enhanced. Also it can be a good way to view your Yahoo Contacts list (& review the mess).

In normal Yahoo Mail view, open Contacts (right pane of screen, left-most icon). Then click the ellipsis (3 dots) and choose "Export to CSV File". This is a simple text file associated with spreadsheets. Once downloaded and opened, you can see just what you have; and how much of that you want to keep. But editing needs to be done in Yahoo Contacts; entry by entry.

While not usually paranoid about the digital world, I do wonder if Yahoo hasn't an ulterior motive for wanting a fine collection of contact details. A hacker would be delighted to get them.

Yet I still prefer Yahoo to Gmail. - Andi Stevenson

The screenshot shows the Yahoo Mail web interface. On the left is a sidebar with navigation links: Back to inbox, Personalise inbox, Mailboxes, Notifications, Writing email, Viewing email, Out-of-office response, Filters, Security and privacy, and Contacts (which is highlighted). The main area on the right is titled 'Contacts' and includes an 'Import contacts' section with buttons for Yahoo, Gmail, Outlook, and AOL. Below this is a 'Connect LinkedIn account' section with a 'Connect' button. At the bottom, the 'Enhanced contacts' section is visible, showing a description and an 'Enable' button, which is pointed to by a red arrow.

The advertisement features the Tatong Heritage Group logo on the left, which includes a stylized illustration of a building. To the right, the text reads: "The THG next meets Monday January 17th 4pm in the Tatong Hall". Below this, the website "www.vicnet.net.au/~tathg" and the email address "tatongheritage@yahoo.com.au" are provided.

QUALIFIED TURF MANAGER

LOOSEN-UP LAWNS & LANDSCAPES

SPECIALISING IN

- > NEW LAWNS > LAWN RENOVATIONS > LANDSCAPING
- > PAVING/STONEWORK > IRRIGATION SYSTEMS

ALSO AVAILABLE

- > SMALL TRACTOR WORK > ROTARY HOEING > SLASHING/MOWING
- > POST HOLING > FRONT END LOADER > SOIL MOVING/LEVELING

25 YEARS
HORTICULTURE
EXPERIENCE

A.B.N.
52 633 846 388

GARRY RUIGROK MOB: 0419 893 286



Mick Gaudion

All farm fencing, Post & Rail, Post Driving.

Qualified Carpenter - Decks, Pergolas,
Renovations, Bathroom & Tiling.

For all your home and farm maintenance.



Thinking of a Garden Wedding?

Call us now to
view our
garden and
consider the
potential of
picture perfect
setting and
personalized
planning.



Ph 03 57 66 6275

www.birchwoodnearbenalla.com.au

Month	Jan	Feb	Mar	Apr	May	Jun	Jul	Aug	Sep	Oct	Nov	Dec	Total
2011	107	177.3	65.0	36.1	62.9	47.1	84.5	81.0	67.3	32.0	88.3	46.3	894.7
2012	82.5	94.0	184.9	18.1	35	57.6	115.8	92.1	35.5	34	28	30.1	773.6
2013	1.8	52.4	85.5	8.4	43.0	60.1	112.1	141.1	61.2	27.5	26.2	65.3	684.6
2014	33.9	16.4	86.4	89.6	82.8	146.5	98.8	9.8	68.5	20.4	58.5	64.2	775.8
2015	44.7	29.1	5.7	87.4	70	33.7	97.3	69.4	25.7	13.7	55.5	81.7	613.9
2016	69.7	11.9	36.9	38.5	117.2	110.5	142.8	108.4	172.1	91.4	50.1	101.3	1050.8
2017	67.6	36.2	49.1	61.7	52.5	6.5	92.1	112.4	23.9	100.1	29.3	118.9	760.3
2018	34.3	6.4	24.9	13.7	49.8	67.2	52.8	81.2	25.1	22.3	75	73.1	525.8
2019	27.7	13.2	23.8	22.7	105	72.9	83.7	49.4	51.3	34.9	37.9	40.8	563.3
2020	63.6	35.6	88.4	207.2	53	77	43.5	66.8	49.4	132	34.1	40.7	891.3
2021	76.6	47.8	39.6	8.2	66.5	99.3	154.9	51.5	92.6	66.5			703.5

WEATHER IN THE TATONG TOWNSHIP

The total rainfall for October was a handy 66.5mm and the total for November up until the 15th of the month was 54.5mm.

Naturally the plant and tree growth is prolific, and reassuring, because so much moisture will be stored beneath the surface giving us an extended growing season.

Mike Larkin



CONGRATULATIONS to Jean Fuleky (nee Beard) who celebrated her 100th Birthday on Sunday 7th November at Cooninda with her family. Her parents were George Beard and Mary Daly, both families lived in Tatong. She is the second youngest of 8 children. Jean's brothers and sister attended Tatong State School.

Jean's father George played football with Tatong, and he was on the Sports committee. The family left Tatong in 1927



After having to cancel in 2020 it was decided to plan for 2021 going ahead and hope that 'the stars would align'. They did. As the day approached Covid restrictions eased to the extent that all that was required was for people to sign in and physically distance.



Not just garage sale sites! Many market stalls also including seedlings – socks and moccas – avocados and cherry pies – wine – soaps – belts and braces. There was even a kitchen sink. It was great to see so many smiling faces – in fact it was nice to see peoples' faces full stop.

There were 37 stallholders, Coffee, CFA sausage sizzle, Busker, and a Jumping Castle. We rely on modest site fees, and visitor donations, to cover costs; and are very pleased to find that the Tatong CFA will receive a donation of \$500.



The Tatong Community Great Big Garage Sale is always held on the Sunday of the Melbourne Cup weekend. Why not start decluttering and join us next year? And would you like to be involved in this great community event? Then do please join the committee! -

John Knapper / Andi Stevenson



Tattler Advertising Rates Inc num: A0047895K

Full Page:

Single Issue:	\$32.00
Six Issues:	\$180.00
Eleven Issues:	\$320.00

Half Page:

Single Issue:	\$16.00
Six Issues:	\$85.00
Eleven Issues:	\$160.00

Quarter Page or 2 x 1/8th Page:

Single Issue:	\$8.00
Six Issues:	\$45.00
Eleven Issues:	\$80.00

General or public interest articles of at least 150 words (not a repeat of the ad.) may incorporate up to a 1/8 page ad. free. Advertorial style articles under this category must be labelled "Promotional Feature".

Enquires :Linda De Fazio, 0357666375 or email linda.defazio6@gmail.com

EFT: BSB 803078 A/C 135720 a/c name: Tatong Tattler
Goulburn Murray Credit Union, 30 Bridge Street, Benalla
Please identify your payment, & e-mail details to Tattler.

ATTENTION ADVERTISERS

For those who submit pre-formatted advertisements, the size of a half page area is 13.6 x 19 cm and a 1/4 page area is 13.6 x 9.3 cm. To avoid distortion to your image, please fit your advertisement to these sizes.

Format for Tattler Submissions

The Tatong Tattler is set up in Microsoft Publisher.

Text can be submitted in the body of an email; or in file formats such as .doc, .docx, .rtf, or .txt.

Photos (as jpgs) can be attached, to be laid out by editor.

If your layout is important, submitting your work in MS Publisher is ideal. (*The Editor may need to adjust your layout.*) If laid out in a **Word** document, the text & photos will need to be copied into Publisher; however the Editor will have an idea of your preferred layout.

The content of a PDF file can be difficult to extract.

If you require help, contact one of the Tattler committee.

DEADLINE

The Tattler Deadline is end of the **20th of the month.**

Submit via e-mail to tatongtattler@yahoo.com.au
or post to Linda De Fazio,
PO Box 588 Benalla 3671.

PROUD SUBSCRIBER OF
Tatong Tattler



**Steph
Ryan MP**

Member for
Eurola

Deputy Leader of The Nationals

StephRyan.com.au

25 Bridge St, Benalla 03 5762 1600

Obtain your Copy of the

Tatong Tattler!

Have a Printed copy delivered, Posted,
or **Download it in Techni Colour**

The Tattler is Delivered free to
Tatong & Surrounding Districts.

The PDF file (in Colour) may be Downloaded
by Anyone, Anywhere, from our Website.

Postal Delivery for one year is \$25 (Australia only).

**To arrange Tattler delivery, order a Postal Tattler,
and/or to be notified when the PDF is available,**

contact us via tatongtattler@yahoo.com.au

or: The Secretary, Tatong Tattler,
PO Box 588 Benalla 3671.

*A donation of \$1 per issue, or \$10 per year,
is appreciated & helps cover costs. The Tattler is
produced and distributed entirely by Volunteers.*

Donations can be:

- ▲ Given to Committee Members
- ▲ Left in the Locked Box by the Tavern
- ▲ or EFT'd to GMCU, BSB 803 078, A/C
135720, Tatong Tattler.