



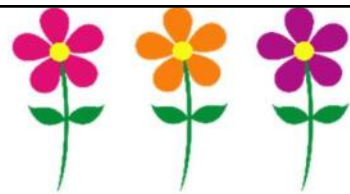
I love this time of the year with all the spring blossoms in the garden and the first flush of asparagus as they pop up their heads seemingly from nowhere!!

Asparagus is a very versatile vegetable. I love it raw in salads, baked in savoury custards, braised in a risotto, and stir fried with Asian vegetables; making it almost a global vegetable which lends itself to many food cultures. Asparagus is a good source of vitamins E and K and helps as a mild diuretic. Over cooked asparagus is not very pleasant and it is at its best when eaten still crisp. To prepare you can snap off the bottom of each stem where it gives but to get more from the spear and to cook evenly I prefer to use a peeler from the bottom of the stem to about half way up. This gives a longer stem, avoids waste and especially if you are steaming or par boiling it will give an even cook to the whole stem. Cut stems on the diagonal to stir fry adding at the end to ensure a crunchy texture. Cooked in a risotto with spring onions, double peeled broad beans, garden fresh peas and topped with crispy, grilled prosciutto reminds me of long ago Italian holidays.

October in our household also means getting ready for Christmas. Well at least getting the pudding and cake fruits soaking to plump them up and become boozy; ready for baking and steaming.

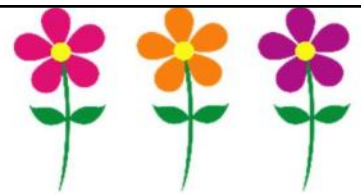
To get the best results for puddings or cakes I use dried fruits bought from health food stores or bulk suppliers. Pre-packed mixed fruit is often mixed with oil to keep it free flowing. This can become a bit rancid when old and will taint the taste of the finished product. I love raisins so I tend to add more of these than sultanas. Likewise I love mixed peel so will add more than you usually get in a bag of pre-mixed dried fruit. Glace cherries are also a favourite with my daughter so again I tend to binge on these in my mix. Prunes are an essential part of my pudding mix – how can we call it plum pudding without the plums !!!! They add great flavour and colour. I tend to go easy on the currants in the pudding mix as they can go a little bitter with long steam cooking. Anyhow here are my recipe ingredients for both cakes and puddings so get soaking now. For Christmas cakes I soak 2.5kg or 5 kg mixed dried fruit in 375ml or 750ml of either sweet sherry or port. You can also add a good slurp of whisky. Left in a tightly sealed plastic bucket or sealed jar and turned over weekly they plump up beautifully and will keep the cake mix very moist. For the Christmas pudding fruit mix I use either 2.5kg or 5 kg of dried fruit making sure that prunes, stoned and chopped in half make up at least 20% of the mix. I go light on the currants and again like to use more raisins than sultanas. But that is personal preference. As long as you get to the total fruit amounts it doesn't really matter. Soak the pudding fruits in 375ml or 750ml port and a good dash of brandy.





It's time for

Spring Cleaning



**Change your
unwanted 'stuff'
into \$\$\$**



At the Tatong Community Great Big Garage Sale

\$10 per site (4x4)

With lots of stalls, coffee van, sausage sizzle, busker...
In beautiful Tatong – Sunday November 3rd - 9 am-12 noon

Site enquiries to John on 5766 6268 or tatonggaragesale@outlook.com

Does anyone have some rough/rocky hilly acres they would like grazed by a few fat ponies who need more exercise.

We have a few here that are currently living the lazy life on our very flat land , not the most suitable for them.

Adequate fencing, water and shade obviously a requirement Anywhere in Tatong, Samaria, Swanpool, Lima areas OK.

Contact Greg msg or call 0409 925 869.

*The grass is greener
in the country!*



- > Fully licensed, insured & reputable agency
- > Over 34 years Travel industry experience
 - > Hot Deals & monthly specials
 - > 24/7 support worldwide

Tess Oshea

Mobile Travel Agent
0432 218 668



e: toshea@mtatravel.com.au

w: mtatravel.com.au/toshea

f: [/mtatravelviolettown](https://www.facebook.com/mtatravelviolettown)

Eulogy to Cath Ramage – 21.1.1928 – 19.8.2019

Cath was born to Emma and Robert Nicholas in 1928 and lived in Upper Ryan's Creek her whole life - she never lived anywhere more than three miles from where she was born.

She was educated at her beloved Ryan's Creek Upper State School, where a 1939 edition of the school newsletter describes her as a model student.

She was also a keen tennis player, and competed for Upper Ryan's Creek in the district competitions and tennis tournaments, often partnering with her future husband Eric. She became Treasurer of the club and looked after their finances until they closed.

She was also an active participant in all the concerts put on by the local community, to aid the war effort, and have fun within the community during a time of world conflict.

She became the Assistant Post Mistress to Mrs. Ruby Ramage when the first Post Office was established in Upper Ryan's Creek at the Ramage Household.

Cath had a long and proud association with the Benalla Hospital Ladies Auxiliary, where she toiled making sauces, condiments, cakes and sweets to be sold on the tables at the hospital gatherings. Her cooking prowess is legendary, and as a legacy, has had a couple of her recipes published in the Hospital Auxiliary Cook book. Her sauces were to kill for, and at a recent auction, one of her bottles of tomato sauce sold for \$70.

Her home garden, both front and back, and her beloved orchard of Golden Delicious apples and other fruit, was one of her favourite places. Many a family has been given produce from that small patch of productivity.

Most of all, Cath was known far and wide for her community spirit and involvement.

- She never failed to attend an important meeting of any local group.
 - Both Cath and Eric were keen dancers and attended all local functions.
 - She was always the first to put up her hand to help out and supply goods at any of the local gatherings.
 - She organized the making of sandwiches and eats (when that was allowed) for the workers at all emergency situations in the district such as fires, accidents and flood emergencies.
 - She ran the kitchen at the Molyullah Easter Sports for well over 60 years.
 - Cath, along with Eric, organised and ran the Molyullah Card nights on alternate Friday nights for as long as I can remember. This which pumped thousands of dollars into the upkeep of the Hall and Recreation Reserve.
- Cath and Eric also organized and ran the Molyullah Easter Sports raffle, and must have sold tens of thousands of raffle tickets over the 40 or 50 years they took control of that arduous commitment.

Cath was happy to pass on what history of the district she could remember and when told recently that she should be very proud of her many contributions to the community, she added that she was also very proud of her three children, Gloria, Shirley and Ian, and their extended families.

This is a shortened version of a memorial to Cath by Bill Willett – thanks Bill.

Vale: Max Baldwinson

The community would like to extend deepest sympathy to the Ramage family on the recent passing of Max, Cath's son-in-law and husband of Gloria. Max passed away suddenly at the Ramage farm in Upper Ryan's Creek on Friday, 13 September. Our thoughts are with you all.

Janette Knapper



FOLLOWING CAPTAIN COOK by Linda De Fazio

French Polynesia is sublimely beautiful. Tropical volcanic islands with clear aquamarine waters, jagged mountains reaching up into the clouds. We visit 3 of the islands, Tahiti, Moorea and Bora Bora. Much of the infrastructure was built during WWII by American soldiers based in the area. Since the

GFC the economy of these islands has suffered, with many of the exclusive resorts closed and empty. Cruise ships are warmly welcomed.

Next, it's on to Hawaii, 5 days at sea. 'TOH' is a bit towie, he is more of an earthy man, farming and concreting, not sailing around very big oceans in very big ships. In all this time, thousands of kilometres we haven't seen another ship, a bird, a fish; the Pacific is massive indeed, 5kms deep in places. I have really enjoyed life aboard, fantastic live music, from classical to rock, the shows in the theatre, even the many games of UNO in the card room.

In Honolulu we change ships, after negotiating the US border force. I don't think the officer liked me answering 'I wish' when he asked if I was carrying more than \$10,000 in cash! This time it's Pride of America. This ship is very Southern Belle with a gorgeous staircase in the central atrium reminding us of Gone With the Wind. Our cabins are much smaller, the food is better, except for the fried potatoes with everything and our cabin is in the stern so much easier to find. The coffee is awful.

For the next week we circle the Hawaiian Islands, Maui, the big island (Hawaii), Hilo the first day, then Kona, Kauai for 2 days then back to Oahu. The tours from the ship are expensive so we negotiate taxi rides for a set fee and because there are 4 of us this works out well. At Hilo we have a fantastic, knowledgeable driver, Frank, who takes us to see where Kilauea erupted in 2018. It is unbelievable; many, many kilometres of black lava, still hot underneath our feet. A whole housing estate just covered. Some of the residents have built tiny cottages on their blocks, but there are no services and roads have only just reopened. Affected residents received just \$35,000 compensation to restart their lives. Frank takes us to a black sand beach where lava has encroached into the sea leaving the boat ramp a kilometre from the ocean.

We don't see much farming activity on any of the Islands, the sugar cane industry is gone. New environmental laws caused the sugar processors to close down rather than spend funds to comply. There are very few pineapples grown now, the main agricultural products are coffee (Kona coffee is pretty well known) and macadamia nuts.



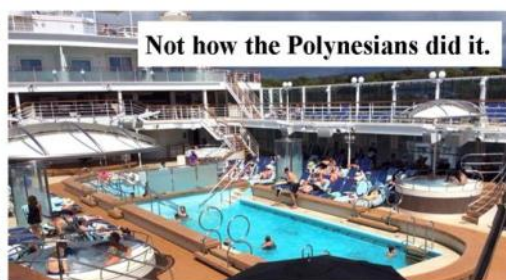
Macadamias are indigenous to Australia but grown in quantity in Hawaii.

Kauai is the most picturesque of the islands, very rugged, with a Grand Canyon equivalent called Waimea Canyon where much of Jurassic Park was filmed. On the final day we sail past the Nawiliwili Coast, it's rugged peaks and canyons looking amazing at sunset.

Captain Cook was killed in Hawaii on November 7, 1779, aged just 50, at Kealahou Bay. He was killed in a skirmish with the natives when they realised he was not actually a deity, as they had thought but was trying to take their King hostage until a stolen boat was returned. Nevertheless he was held in great esteem, his body was retained by the Hawaiians and underwent funerary rituals usually reserved for chiefs and elders. James Cook made 3 voyages to the Southern Pacific, charting New Zealand and most of the coast of Eastern Australia in his first, the second into the Antarctic Circle, proving that Terra Australis Incognita was a myth. He predicted that an Antarctic landmass would be found beyond the ice barrier. His third voyage was via Capetown to New Zealand, Hawaii, then along the North

American coast to the Bering Strait in search of the Northwest Passage. How James Cook navigated vast oceans in a little wooden

vessel is a mystery to me, much like those other master navigators, the Polynesians. - The End



Not how the Polynesians did it.

White Gate



Dates

The October **White Gate Dinner @ The Tatong Tavern** will take place October Wednesday 2nd, 6:30pm-ish, book yourselves in. It ought resume normality by actually being held at the Tatong Tavern. That worthy estate was under siege by hordes of Table Tennis players on the first Wednesday of September. Consequently, a small but select group of White Gate diners took their dinner at the Kim Wah in Benalla. The change of cuisine (delicious) and location (pleasant, if a bit of a drive for those closer to Tatong) made for a nice variation. A change, it is said, is as good as a holiday. But with which sauce?

- Andrea Stevenson, 5762 8445

White Gate Fire Brigade Roster:

Noel Hutchens	29 Sep	Andrew Marriott	27 Oct
Bill Ferguson	6 Oct	Terry Trounson	3 Nov
Norton Grimwade	13 Oct	Les MacLean	10 Nov
Terry Ryan	20 Oct	Lewis Vallender	17 Nov



- Post and Wire • Post Driving • Post Hole Digging
- With over 25 years experience • Farm Fencing
- Post and Rail • Stock Yards • Horse Shelters • Frontend Loader
- Slashing • Pipe Laying to Stock Troughs etc.

• S1835 Kilfeera Rd, Molyullah Vic 3673

Email: bustedacre@people.net.au
0428715155 AH 03 57666338

DE FAZIO

Concreting & Paving

house slabs
shed slabs
decorative concrete
paving

Laurie - 0407 099 930
Matt - 0410 514 192
Christian - 0415 422 942

Suck it Up

SEPTIC PUMP OUTS

Why is it important to pump my septic tank out regularly?

Over time scum and sludge layers build up in your septic tank, eventually limiting the amount of available liquid. This does not allow the septic tank to perform one of its basic functions - to allow for settling of solids below the outlet level.

The waste will then flow directly on to the next part of the system untreated. If this situation persists, the scum and sludge will flow through to the distribution field, eventually causing blockages and malfunction - a messy, smelly and costly exercise to repair.

It is recommended that septic tanks are pumped out every 3 - 5 years



Call us today to get your septic tank cleaned out

0447 521 981



Garden Daze

The best time to plant a tree is 20 years ago - the next best time is now



At last the soil is warming up . .

And (if?) the frost has finished, this is now the time when the summer vegies can go in the ground. Tomatoes, capsicum, eggplant, chilli, basil, beans (bush and climbing), sweet corn, zucchini, cucumber, potatoes, pumpkins and melons.

October is also good time to plant evergreen fruit and nut trees. A "rule of thumb" re watering newly planted trees:

Water once per day for a week

Once per week for a month,

And once per month for a year.

Make sure that each drink is a good soaking and if the soil is dry to start with, rewet it, by using a soil wetting agent.

Remember, when deciding to plant a fruit tree, that Fruit Fly can be a problem - keep any fruit trees small enough to cover with an exclusion net.

AND - if you have fruit trees that you no longer want or need it is better to remove the trees, than to have them harbouring Fruit Fly.



Some time ago while watching *Gardening Australia*



I was pleasantly pleased to see that Jerry Colby Williams keeps a couple of "Rescue" Guinea Pigs in a small run in his garden to keep the grass down as part of his *integrated garden plan*.

I started sharing Guinea Pigs with my grandchildren just over 20 years ago and have found them a very useful addition to my gardening. Although as Peter Z has remarked at times when Guinea Pigs were on "path duty" - trying to get from one end of the garden to the other requires a map marked with "no road!" signs.



I have discovered that once Guinea Pigs have established where "home" currently is, they will return at night after having been let out of their run to graze.

Since most of my vegie gardening is now in either raised beds or wicking beds, I have let Smudge (she has a black rim around her face) and Haircut (When I bought him at the Wangaratta pet Shop - I was unaware that the hair of long haired Guinea Pigs continues growing) have a free run in the garden. Here I must hasten to add that this garden has a six foot high cyclone fence around it, and there are several conveniently located hidey places for "time out". So they are as safe as I can make it for them.

In a very short time, their relocatable run will have short grass, and the surrounding area begin to resemble lawn. Also, when they locate a second run with another pair of Guinea Pigs they will "visit" and the grass around that run also gets a trim.

Guinea Pigs are social animals and in some countries - Switzerland is one - it is against the law to have only one Guinea Pig.

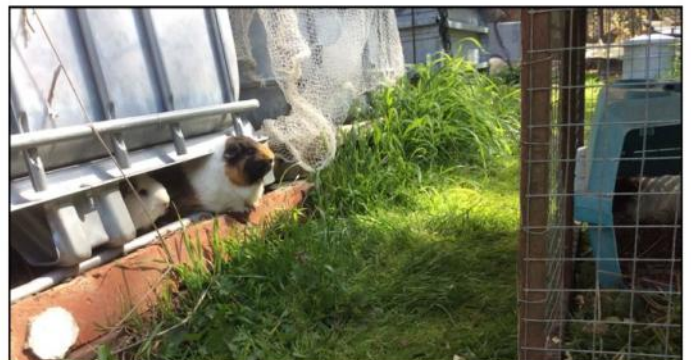
And for those of you who are wondering how long it will be until I have a dozen or so running around - the current girls are rescues from the RSPCA and have been desexed.

In the past I have had two runs, one for males and the other for females, and that the males have got on together very well, until . . I obtained Sathra Snaptrap from Abbey over at Swanpool. Snappy - A show quality Himalayan (I have his pedigree back for several generations) turned out to be very aptly named, as he is ready to fight all male comers. Which was why and when the "boys together" system changed, and I found them each a female companion.

Apart from the Guinea Pigs eating most of our fruit and vegie scraps - I find the residue hay from their house, makes excellent mulch/fertilizer for the garden beds.

They are also company for the gardener - a couple of days ago, as I was kneeling in front of the asparagus bed weeding - Smudge was beside me, chattering away and eating the weeds as I was pulling them out.

Smudge had been someone's pet before finding herself at the RSPCA in Wangaratta, and she is the most tame Guinea Pig I have ever had. Haircut is also quite tame, and Snappy is friendly. However his partner Chiltern (also from the RSPCA in Wangaratta - and I presume her name denotes her origin) is much more timid and doesn't hang around if she thinks visiting humans are getting too close.



Smudge (the one with black around her face) and Haircut, checking out a couple of new additions to the "crew" from their vantage point under one of the wicking beds.

Yes - that was "new additions" as Peter Z and John K would agree. .



Enjoy the Spring Kathy Z

QUALIFIED TURF MANAGER

LOOSEN-UP LAWNS

& LANDSCAPES

SPECIALISING IN

> NEW LAWNS > LAWN RENOVATIONS > LANDSCAPING
> PAVING/STONWORK > IRRIGATION SYSTEMS

ALSO AVAILABLE

> SMALL TRACTOR WORK > ROTARY HOEING > SLASHING/MOWING
> POST HOLING > FRONT END LOADER > SOIL MOVING/LEVELING



25 YEARS
HORTICULTURE
EXPERIENCE



A.B.N.
52 633 846 388

GARRY RUIGROK MOB: 0419 893 286

PEST ANIMAL MANAGE- MENT

Protect your Home Environment,
Crops, Pastures and Stock from
Rabbits- Fox- Deer- Kangaroos
and Wombats

Agricultural Blasting Stumps re-
moved
Wombat and Rabbit burrows col-
lapsed.

North East Bunny Busters
2385 Midland Hwy Swanpool ph
0421363967

FIREWOOD



**CUT SPLIT
AND DELIVERED
8 METRES - \$600
CALL RUSSELL – 5766 6250**



kingofsparks.com

Re-evalutate your energy

Creating sustainable solutions, for energy efficient consumption

- General Electrical
- Solar
- Solar/Batteries
- Power Diverters
- Heat Pumps
- Solar Hot Water
- Air-conditioning
- Heating
- LED lighting
- Insulation

03 5779 1991 | www.kingofsparks.com

FORTHCOMING EVENT - MOORNGAG MOWER MANIA 2019

The Moorngag Mower Mania will again be held as part of the Benalla Festival on 2 November this year.

Andrew Lavis the Event Coordinator was excited to announce that the event will be bigger than last year with increased nominations received to race at the event. The action filled day will commence at 9.30am with the Juniors riding Standard mowers. The Open classes will feature machines powered by engines of up to 450cc and will provide action packed racing which will not disappoint spectators.

Andrew commented that there will also be a model rail display from Melbourne on show inside the hall to delight model train enthusiasts of all ages. The display will be open to the public on Friday evening and throughout Saturday and will feature a fictional Victorian station in Central Victorian with pre 1980s trains running. You will see VR Steam loco's, VR Diesels all the way through to the V/Line period running.

He added that there will also be a Vintage Stationary Engines display at the event for all engine enthusiasts. Come along and enjoy the exhibition provided at this year's event.

The Moorngag Mower Mania will be strongly supported by Benalla Rural City Council, Elders Insurance, Sharpe's Outdoor Equipment, Benalla Bus Lines and Glider City Motel.

If you have any queries relating to the event please contact Andrew Lavis on 0408 793 606.



BENALLA SHIRE CELEBRATES 150 YEARS

On Friday 23rd August The Benalla Shire celebrated 150 years with a special ceremony to honour the proclamation of the Shire of Benalla. The celebrations were arranged by the Benalla Historical Society and the event was held in the Costume and Kelly Museum followed by afternoon tea.

Steve London former Shire Secretary spoke on the history of the town's local government entities. The town of Benalla began its existence in 1839 as a police post. In September that year the area was surveyed and the settlement was named as the Broken River Crossing Place

The early settlers arrived in Benalla in the 1840's and the town was surveyed in 1848. In 1861 Benalla township was proclaimed and in 1869 the Shire began its journey. In those days the Shire rates were spent in the Shire and the City rates were spent in the City. In 1883 the original Shire Offices were built in Nunn Street which are now the Town Hall.

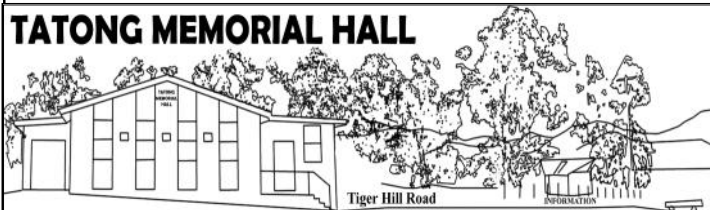
In 1994 The Shire, the City of Benalla and Mansfield Shire amalgamated to form Delatite Shire.

In 2002 Delatite Shire split away from Mansfield to form Benalla Rural City.

Joan Lewis



Pictured at the celebrations are from right Evan (Toby Lewis) a former Shire Councillor and Shire President, his wife Judy Lewis, Joan Lewis whose evening gown on the model, she wore to the Centenary Ball in 1969 in the Benalla Town Hall.



FOR SALE
20' SHIPPING CONTAINER
\$2400

Buyer to remove after 10th Nov
Contact - Patricia Manser 57672287



Quentin White & Co
TANKS & PLUMBING



6,800 - 500,000 Litres

Zincalume & Colorbond Steel Pioneer Water Tanks

Australian made BPA free Liner

20 year conditional warranty

Supply, delivery & installation included

Call for a tank quotation, or email

quentinwhiteplumbing@gmail.com

0407 90 36 37

www.qwtanks.com.au

Gravel/Crushed Rock *Supplies*

- ✓ **Crushed Rock** ✓ **Aggregates**
- ✓ **Sand & Gravel** ✓ **Feature Rock**

To suit Driveways, Laneways, Pathways etc
Earthmoving equipment available for all jobs

Servicing all areas
Direct to public
Pick up or Delivery

Buy direct
from the quarry
and save!



Ph 5768 2366

Thinking of selling... What are you waiting for?



The strongest network and most experienced team are right here.

Albury 02 6024 6830
Alexandra 03 5772 1110
Barham 0428 566 397
Benalla 03 5762 2445
Bendigo 03 5442 3022
Boort 03 5455 2002
Camperdown 0418 616 524
Cobram 03 5871 1999
Cohuna 03 5456 2927
Culcairn 02 6029 8855
Deniliquin 0428 566 397

Echuca 03 5482 6966
Edenhope 03 5585 1411
Euroa 03 5795 2240
Heyfield 03 5143 1635
Horsham 03 5381 0022
Kerang 03 5452 1166
Kilmore 03 5782 0400
Kyabram 0418 570 545
Kyneton 03 5422 1980
Leongatha 03 5662 4388
Mansfield 03 5775 1444

Pakenham 03 5941 5396
Sale 03 5143 1635
Shepparton 0419 395 011
Warrnambool 03 5562 4022
St Arnaud 03 5495 1835
Stawell 03 5358 1068
Tatura 03 5824 2300
Wagga Wagga 02 6921 1700
Wangaratta 03 5721 2047
Wodonga 02 6024 6830
Yea 03 5797 2079



Les Amoureux de Lyon (The Lovers of Lyon)

'Lovers of Lyon' – what does that conjure up in your mind?

The first thing that springs to my mind is that Lyon is a food lover's paradise. It is often described as the food capital of France. A food critic once referred to Lyon as "the gastronomic capital of the world". You can eat at tiny family bistros, pavement cafes, restaurants and world class Michelin Star establishments, from Vieux Lyon (Old Lyon) eastwards to the newer areas.

A traditional eatery is the bouchon, which is unique to Lyon. They evolved to feed the silk workers in days gone by, using old family recipes for sausages, pate or roast pork with local wines. Two of France's best known wine regions are located close to the city – the Beaujolais and Cotes du Rhone regions.

Because of this reputation as a food centre, Lyon has always been an attractive place for chefs to settle and develop their skills. Perhaps one of the best known of Lyon's chefs was Paul Bocuse.

Beside all the eateries, Lyon is equally well known for its many markets – from outdoor farmers' markets to very up-market indoor markets. The St. Antoine farmers' market is open every day except Monday on the banks of the Saone River. Perhaps the most up-market market is the Paul Bocuse indoor market, with its reputation for the finest gourmet food. We had a guided tour. Our guide told us, "this is where I shop when my mother-in-law is coming to dinner".

The variety of stalls is amazing – there are butchers, bakers, fishmongers, cakes and chocolates, wines and spirits, cheesemongers, fruits and vegetables, dried meats, poultry (Bresse Chicken), truffles, spices, flowers... There are also bars and restaurants. Next time you're in Lyon, do yourself a favour...

But, say "the lovers of Lyon" to the Lyonnais and they will think of their rivers.

Lyon sits at the confluence of two rivers, the Saone and the Rhone. They are known locally as the lovers. They are often depicted as male and female figures. The Rhone is the larger, stronger of the two and is the male. The Saone is a quieter, gentle river and is the female.

That's two of, no doubt, the many lovers of Lyon.

John Knapper





BENALLA FURNITURE REMOVALS

- Storage available short and long term
- Servicing all Victoria and interstate
- Professional and friendly staff
- No move too big or too small
- Quality boxes and moving materials for sale
- Reliable on time and insured

Let us take the stress out of moving!



0419 142 666

BFR@outlook.com.au

Merchandise

Fertiliser

Real Estate

Livestock

Wool

Finance

Insurance



LANDMARK RURAL SUPPLIES

Come in and see us for all of your rural supplies

We have a huge range of Stock in Store Now including:

- Fencing
- Stock Yards
- Stock Feed
- Animal Health
- Water Products
- Fertiliser
- Weed and Pest Control
- Work Boots and more...



Landmark Benalla | 206 Bridge Street, Benalla | 03 5762 2188





**first
national**
REAL ESTATE

| John Canavan



@johncanavanrealestate
John Canavan Real Estate
Mansfield's trusted agents.

Thinking of selling?

WE'D LOVE TO HELP!



TOP SELLING MANSFIELD AGENCY - AUG & SEPT Source: realestate.com.au

Have a property in Tatong, Swanpool, Moorngag, Molyullah, Samaria, Lima, Lima South or Lima East?

See what our clients have to say about us ...

“

Ryan is very professional in his approach to selling and works very hard to negotiate the best possible price. He is very honest with feedback and always encouraging with his cheerful personality.

Pamela - Tatong

“

Gerard has shown a truly professional knowledge of the area that is second to none. Our sale and purchase have been completed with the ease thanks to the whole team.

Robert & Elspeth - Tolmie

“

We found Amanda and the Sales Team at Canavan's Agency to be professional, reliable, knowledgeable and genuinely keen to assist and show us all available options.

Coral - Barwite

74 High Street,
Mansfield

www.johncanavan.com.au

5775 2792



Wangaratta Vintage Car Club return to Molyullah

Having enjoyed their luncheon and time spent in Molyullah as part of their car rally in September, 2017, the Wangaratta Vintage Car Club returned for a "repeat performance" on a sunny Saturday, 14 September 2019. Thanks to all the volunteers who helped on the day, prior to the event, and post event. We had community members cleaning, devising the menu, purchasing goods, setting up, cutting up, cooking, directing traffic (there were 73 beautiful and expensive old vehicles), directing people, serving, clearing, chatting, packing up and cleaning up etc. etc. Age range of our helpers was from 14 to well over 70 – there was a job for everyone.

Thanks also to all the ladies in Molyullah who donated a delicious cake/dessert for this event. Standing in front of the dessert table one of the visitors turned to me and asked "Is this what is known as heaven?" Having the cakes/desserts prepared and donated went a long way to easing the load for those working at the Hall and contributed enormously to the profit we made – which was in the vicinity of \$1,800. It was a very successful event which was not only enjoyed by the car club but by the volunteers as well. Thanks again to all.

It seems the hardest thing is getting plates and containers reunited with their owners. There is one bright pink Tupperware container still waiting for its owner ... *Janette*



Pictured above: Some of the hardworking kitchen team at work in the Molyullah Hall.

Cuballa Kennels & Cattery

- Spacious Heated & Cooled Indoor Kennels with Individual Outdoor Grass Runs



- Climate Controlled Cattery
- Walk-in Modules



Phone 03 5766 4363
679 Winton-Lurg Rd, Lurg
www.cuballakennels.com.au

Bedrock Quarries

- ✓ Farm access roads
- ✓ Driveways
- ✓ Tracks
- ✓ Hardstand areas



All made, repaired or renovated
using Lurg Hills gravel

Call me: **Tim Ward – 0427 587 458**

S.P. & J.E. LEWIS BUILDERS

REG. DB-117960

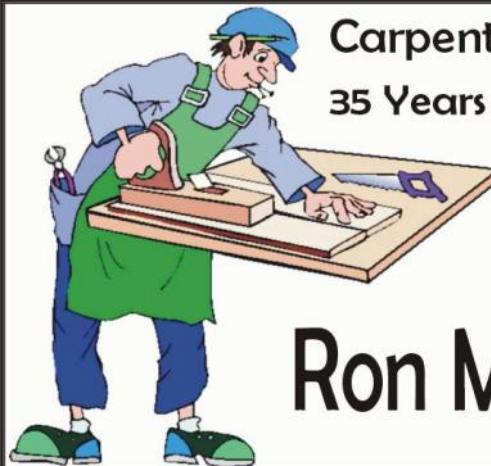


NEW HOMES • EXTENSIONS • RENOVATIONS

Mob. 0417 368 761

Shane & Janine Lewis

- **QUALITY BUILDERS**
- **NEW HOMES, EXTENSIONS & RENOVATIONS**
- **BENALLA & SURROUNDING AREAS**
- **NO OBLIGATION FREE QUOTES**



Carpenter / Joiner
35 Years Experience

Ron Morris

- ❑ Home Maintenance and Extensions
- ❑ Renovations
- ❑ Plastering
- ❑ Concreting
- ❑ Carpentry
- ❑ Tiling

No Job Too
Big
or
Small

Cnr Mitchell & Stephens Rd, Tatong

Phone 5767 2327
Mobile 0417 588 784

Shepherds Contracting

Hay Baling

Net Wrap Rolls or Small Squares
Silage, Mowing, Raking, Tedding
27 Ft Tray Truck
Hay & General Carting
Prompt & Professional Service
Will Consider Shares

Pasture Sowing

Direct Drilling or Over Sowing
Pasture Renovation, Ploughing

Spraying

Boom or Spot
18 Metre or 9 Metre Boom Units

D4 Dozer

Excavator with Auger 350 & 450 Holes

Contact Darren 0438 850 918 Greta South

Ready for Winter?



Come to the 'NEST' at Lima South to let go of stress and negative patterns through mindfulness, gentle movement and simple exercises to support your inner journey.

Lisa Shuck, lecturer at Deakin University in Health and Wellbeing, is offering a monthly Saturday morning mindfulness session from 8:00-9:30 a.m. on: May 25, June 22, July 20, Aug. 24

Come join us by the fire and warm your soul! Ask Lisa about the Wellness Retreats in May, August and October.

Cost - \$20.00 and Concession \$15.00. Beginners are welcome!
Light morning tea included. Contact- Lisa on 0414527610 or retreatatthenest@gmail.com

Thinking of a Garden Wedding?

Call us now to view our garden and consider the potential of picture perfect setting and personalized planning.



Ph 03 57 66 6275
www.birchwoodnearbenalla.com.au

Tatong Tavern



Hi its Pedro your local Publican from the Tavern.

We have a busy October coming up, 20-30 footy tipping people are coming for their drinks and food party, you should join next year. Our Comedy night is back Friday 25th October, 2 course meal and show. \$50 last time, it was a fantastic night, then on Sunday 27th October our Car Shows are back so if you have a bike or car that is interesting please bring it along, there will be a raffle for the Royal Children's Hospital and go in for a chance to win a \$40 gift voucher, we will also have music playing from 12 to 3pm come on down and join in the Local Community Fun.

Looking forward to seeing you all so bye for now
Pedro Shirl Stu and Staff

**\$20 Parma and Pot
Thursday**

**Wallet Watcher's
Wednesday**

**Tuesday
Pizza Night**

**Monthly
Car Event**

Best Beer on Sale in the Tatong Valley since 1886.

A visit to the Montgomerys.

On our recent trip to Ireland we visited Alan and Jacqueline Montgomery, a couple familiar to most Tatong residents because of their visits to their Tatong family.

They may not wish us to return although their hospitality was wonderful. Within an hour of arriving we had managed to reset their television to receive only radio, found the shower much easier to turn on than off and had an argument with a very stylish roman blind in the bedroom, which was easier to let down than pull up and will probably never reassemble in the correct fashion again.

The shower resolved itself, eventually. The television had Alan madly scrambling for the wifi password so we could google 'how to reset that particular model' and as I said the blind may never recover!

Resetting the TV was an awesome job, requiring 1 person to hold in the F button and the volume > button at the same time while another held down the on/off button on the remote and a 3rd person read out the instructions from the ipad. We managed to get the picture and sound restored (I hope they didn't have their favourite channels bookmarked!!) and Alan said he never realized that there were function buttons on the side.

We sent them some flowers after our lovely visit and I got a really nice email from Jacqueline saying ' you shouldn't have bothered, just a new TV, a plumber and a blind repairer would have been enough'. I do hope she was joking in her charming Irish fashion.

Linda De Fazio

JOKES

The older I get the earlier it gets late.

That moment when you walk into a spider web and turn into a Karate master.

When someone asks what I did over the weekend, I squint and ask, "What did you hear?"

I run like the winded.

I hate it when a couple argues in public and I missed the beginning and don't know whose side I'm on.

Interviewer: "So tell me about yourself?" Me: "I'd rather not ... I kinda want this job."

Cop, "Please step out of the car." Me, "I'm too drunk, you get in."

Mike Larkin (from a friend who probably got them off the internet)

Truth in advertising ???

This is a picture of a sign in an aisle in a supermarket in Brunei.


John Knapper

The bottom left quarter reads:-

JUNK FOODS

Snacks



TATONG MEMORIAL HALL						Jun	Jul	Aug	Sep	Oct	Nov	Dec	Total
						37	114.7	58.8	18.9	1.9	89.7	64.9	549.2
						107.9	77.5	65.5	76	48.6	72.3	18.9	625.1
						82.8	67.5	162.1	116.8	123.7	109.2	150.8	1224.7
2011	107	177.3	65.0	36.1	62.9	47.1	84.5	81.0	67.3	32.0	88.3	46.3	894.7
2012	82.5	94.0	184.9	18.1	35	57.6	115.8	92.1	35.5	34	28	30.1	773.6
2013	1.8	52.4	85.5	8.4	43.0	60.1	112.1	141.1	61.2	27.5	26.2	65.3	684.6
2014	33.9	16.4	86.4	89.6	82.8	146.5	98.8	9.8	68.5	20.4	58.5	64.2	775.8
2015	44.7	29.1	5.7	87.4	70	33.7	97.3	69.4	25.7	13.7	55.5	81.7	613.9
2016	69.7	11.9	36.9	38.5	117.2	110.5	142.8	108.4	172.1	91.4	50.1	101.3	1050.8
2017	67.6	36.2	49.1	61.7	52.5	6.5	92.1	112.4	23.9	100.1	29.3	118.9	760.3
2018	34.3	6.4	24.9	13.7	49.8	67.2	52.8	81.2	25.1	22.3	75	73.1	525.8
2019	27.7	13.2	23.8	22.7	105	72.9	83.7	49.4					418.4

WEATHER IN THE TATONG TOWNSHIP

The rainfall has slowed somewhat with only 49.4mm total for the month of August and 32.7mm up until the 15th of September.

We have had one noticeable change in the lawns from the weather since summer. Nearly all of the Kikuyu grass has disappeared in two back lawns and it is being replaced by a very fine leafed clumping grass which is tough and hard to cut and make lawn from. Anyway it looks ok to walk or play upon with its fur like appearance. It is not Onion grass, much finer and Google did not help much regarding identification. Possibly the unrelenting high temperatures of last January was too much for the kikuyu?

Mike Larkin

TATONG ART SHOW 1 – 5th & 8th – 10th November.

Just a reminder -

To have your entry forms in by October 21st. They can be left at GMCU in Bridge St Benalla or posted to 330 Mitchell Rd Tatong 3673.

Entry forms are still available through the Benalla Library, Art Gallery, Information Centre, NEA, She's Arty, AriArt Framing, GMCU and various other shops and galleries throughout the region.

This year we have 10 prizes with a total value of \$3150 – so get those paints and brushes, pencils or camera out and get cracking!!

See you in November

Nicole

UPCOMING EVENTS FOR TATONG AND DISTRICT

With the approach of the spring festivities in Benalla and district we have various groups feverishly working to fine tune their events to coincide with the Benalla Festival.

The **Tatong hall Art Show** sub-committee, led by Nicki McFarlane, has been working for months to prepare this annual event which runs for the duration of the festival, and for those whose interests encompass mainly what comes out of sheds The **Tatong Community Great Big Garage Sale** will be held at the Recreation Reserve on Sunday the 3rd of November, the first weekend of the Festival, from 9am till 12 noon.

There will also be the **Strathbogie Festival of Art** which is to be held at the same time as the Tatong show. This is a new festival including more than just an art show with an assortment of innovative and creative activities throughout the town in the week of the festival. To provide maximum publicity both shows, Tatong and 'Bogie, are promoting one another. For people unfamiliar with Strathbogie it is on a plateau between Swanpool and Euroa and is well worth a drive due to its beautiful landscape. From the Swanpool end a trip can start by going up the winding dirt Police Track, a scenic route through native bush and pine plantations. The road is kept in good condition due to logging truck usage. Make sure to get entry forms or book a site for these annual events before it is too late. For the Big Garage Sale contact John Knapper on 57666268 or for the Tatong art show Nicki McFarlane on 0428 696 408.

Strathbogie can be contacted via Sim on 0455 246 141. Regarding the **Tatong mural project** which I am promoting and it is clear to me that it won't start properly till after the November Festivities are completed. I am currently committed to paint for three art shows plus to volunteer for both the Tatong events mentioned above.

Mike Larkin



What's on this month

October 2019

Sun	Mon	Tue	Wed	Thu	Fri	Sat
		1	2 <i>W</i> hitegate Community Din- ner.	3 <i>P</i> lay group, 9.30,am Tatong Rec Res .	4	5
6	7	8 <i>M</i> ansfield Bush Poets. Mansfield Library 3-5pm.	9	10 <i>P</i> lay group, 9.30,am Tatong Rec Res .	11 <i>F</i> ish & Chip Night. Mo- lyullah Hall 5.30pm	12
13	14	15	16	17 <i>P</i> lay group, 9.30,am Tatong Rec Res .	18 <i>G</i> irls Shed 10.00am at Tatong Hall	19
20	21	22	23	24 <i>P</i> lay group, 9.30,am Tatong Rec Res .	25	26
27	28	29	30	31		

RIP TED EXTON, A MUCH LIKED AND RESPECTED LOCAL

Ted died on Wednesday the 11th of September at home in Benalla. From social media notices and Ensign death notices it can be seen how well liked and respected he was.

He grew up in Samaria where his brother Colin and sister Margaret still live on parts of the original farm. He was down to earth and traditional yet mixed easily with all levels of the community.

When we lived in Samaria for 8 years we got our fresh milk and cream from him all that time and beyond, far preferring it to shop stuff. He always kept one jersey cow for that purpose, keeping tradition alive in a society going slowly crazy over health and safety.

He was a hard worker, running his farm, shearing, fence building and digging graves at the Moorngag Cemetery for many years and all by hand, unless striking rock. A noticeable feature of his farm was the native kangaroo grass growing in the front corner paddock and along Exton Road, again putting nature before modern high

production methods. Maeve and I once joined a nature walk along Exton Road with a group of locals and the leader, I think it was Ray Thomas of Regent Honeyeater fame, was full of praise for the way Ted enabled the rich variety of species there to survive and flourish due to his more natural farming practice.

Ted looked after his wife Betty at home in her final battle with cancer. They made a somewhat odd couple with her the 'no nonsense' smoking shopkeeper and Ted the humble 'farm lad.' Ted moved the old Samaria schoolhouse to his farm keeping it for posterity and rumour has it that it was full to the brim of his 'treasures.' Another favourite pastime of his was old time dancing and he was a regular at many of the district dances, there meeting his close companion of later years, Margaret. Ted moved into Benalla and continued his favourite pastimes of working with the Benalla Lions Club and selling and buying his endless collections of treasures at the market.

He was a person I am proud say was a friend and someone who was easy to be with. Condolences to Judy, Margaret and extended family.

Mike Larkin

Tattler Advertising Rates

Inc num: A0047895K

Full Page:

Single Issue:	\$32.00
Six Issues:	\$180.00
Eleven Issues:	\$320.00

Half Page:

Single Issue:	\$16.00
Six Issues:	\$85.00
Eleven Issues:	\$160.00

Quarter Page or 2 x 1/8th Page:

Single Issue:	\$8.00
Six Issues:	\$45.00
Eleven Issues:	\$80.00

General or public interest articles of at least 150 words (not a repeat of the ad.) may incorporate up to a 1/8 page ad. free. Advertorial style articles under this category must be labelled "Promotional Feature".

Enquires :Darcy Hogan, 5767 2187 or email
darcyhogan@bigpond.com

EFT: BSB 803078 A/C 135720 a/c name: Tatong Tattler
Goulburn Murray Credit Union, 30 Bridge Street, Benalla
Please identify your payment, & e-mail details to Tattler.

ATTENTION ADVERTISERS

For those who submit pre-formatted advertisements, the size of a half page area is 13.6 x 19 cm and a 1/4 page area is 13.6 x 9.3 cm. To avoid distortion to your image, please fit your advertisement to these sizes.

STEPH RYAN MP

Member for Euroa

Deputy Leader of The Nationals

*Proudly supporting the
Tatong Tattler*



25 Bridge St, Benalla

PH: 03 5762 1600

WWW.STEPHRYAN.COM.AU

Obtain your Copy of the

Tatong Tattler!

Have a Printed copy delivered, Posted,
or Download it in Techni Colour

The Tattler is Delivered free to
Tatong & Surrounding Districts.

The PDF file (in Colour) may be Downloaded
by Anyone, Anywhere, from our Website.

Postal Delivery for one year is \$25 (Australia only).

To arrange Tattler delivery, order a Postal Tattler,
and/or to be notified when the PDF is available,

contact us via tatongtattler@yahoo.com.au
or: The Secretary, Tatong Tattler,
150 Mt Joy Rd, Tatong, Vic, 3673.

*A donation of \$1 per issue, or \$10 per year,
is appreciated & helps cover costs. The Tattler is
produced and distributed entirely by Volunteers.*

Donations can be:

- ▲ Given to Committee Members
- ▲ Left in the Locked Box by the Tavern
- ▲ or EFT'd to GMCU, BSB 803 078, A/C
135720, Tatong Tattler.

DEADLINE

The Tattler Deadline is end of the **20th of the month.**

Submit via e-mail to tatongtattler@yahoo.com.au
or post to: Darcy Hogan, 150 Mt Joy Rd, Tatong,
3673.

Format for Tattler Submissions

The Tatong Tattler is set up in Microsoft Publisher.

Text can be submitted in the body of an email; or in file formats such as .doc, .docx, .rtf, or .txt.

Photos (as jpgs) can be attached, to be laid out by editor.

If your layout is important, submitting your work in MS Publisher is ideal. (*The Editor may need to adjust your layout.*) If laid out in a **Word** document, the text & photos will need to be copied into Publisher; however the Editor will have an idea of your preferred layout.

The content of a PDF file can be difficult to extract.

If you require help, contact one of the Tattler committee.